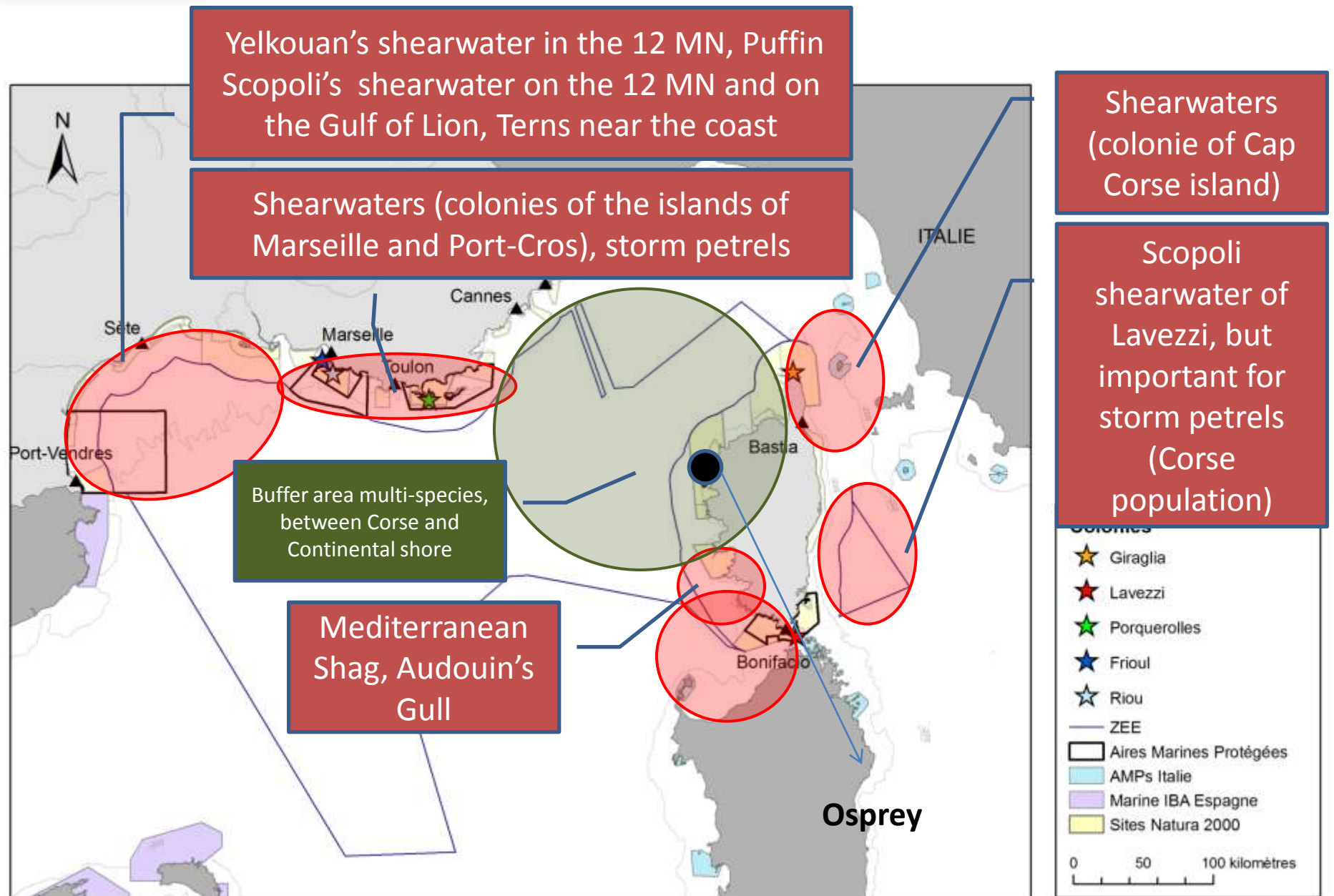


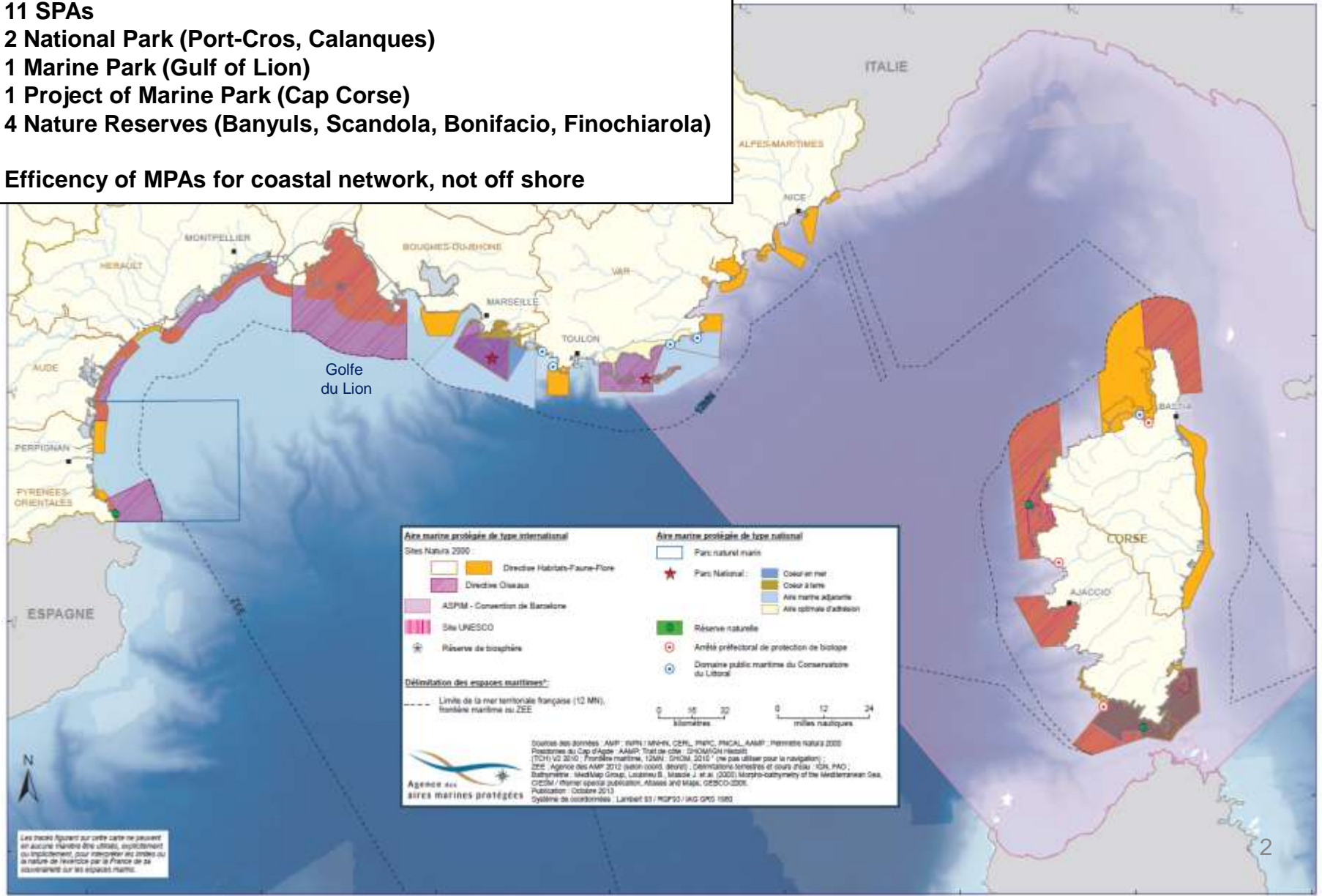
# French Marine hot spots 2015



**TODAY**  
**71 MPAs**  
**510 00km<sup>2</sup> (with PELAGOS)**

**For Birds**  
**11 SPAs**  
**2 National Park (Port-Cros, Calanques)**  
**1 Marine Park (Gulf of Lion)**  
**1 Project of Marine Park (Cap Corse)**  
**4 Nature Reserves (Banyuls, Scandola, Bonifacio, Finochiarola)**

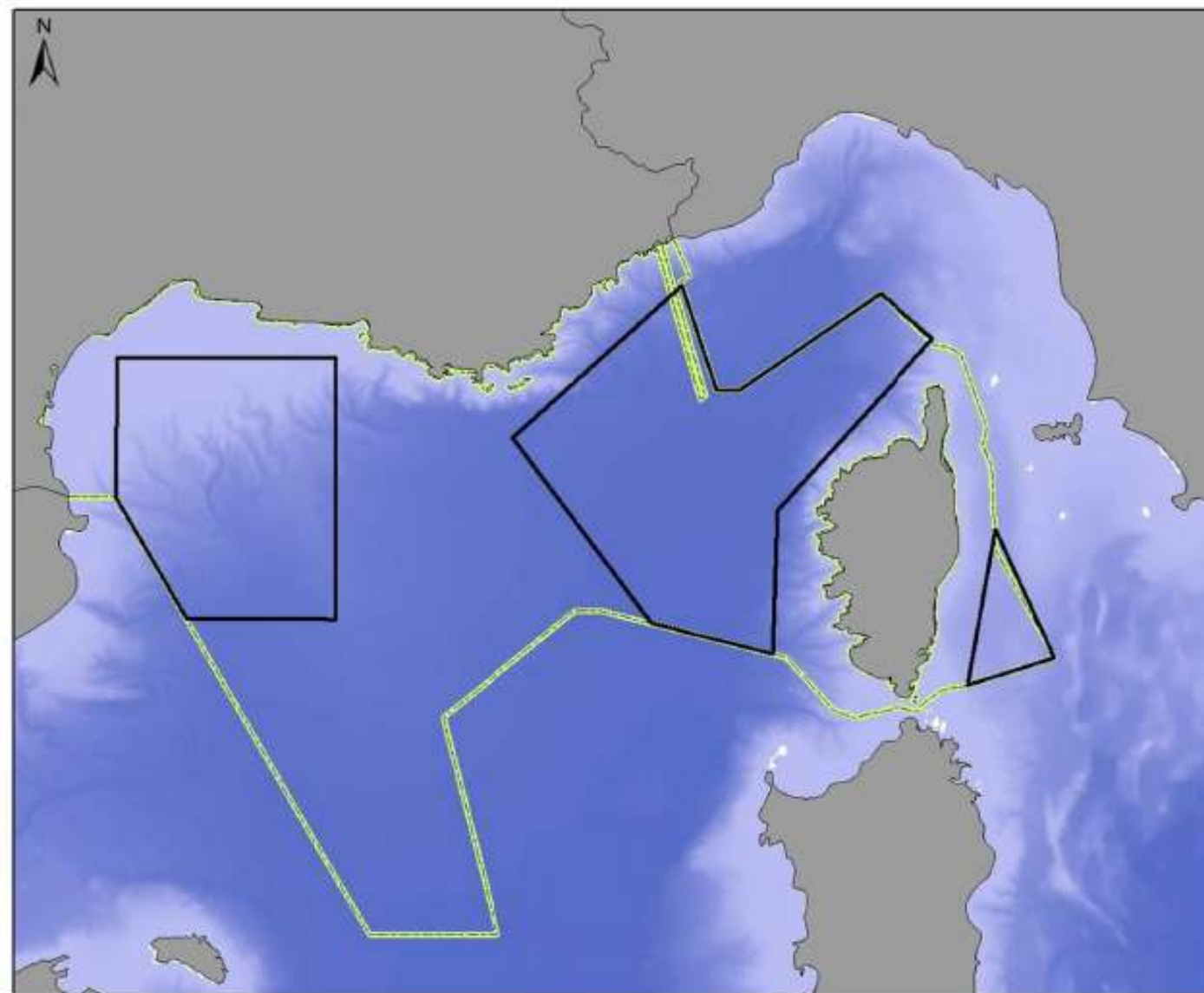
**Efficiency of MPAs for coastal network, not off shore**




Les traces figurant sur cette carte ne peuvent en aucun cas être utilisés, explicitement ou implicitement, pour revendiquer des droits de la nature de l'exercice par la France de sa souveraineté sur les espaces marins.

# Big areas for the designation of SPAs (High sea)

## Grands Secteurs - Méditerranée Oiseaux et Mammifères marins



### Légende

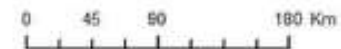
 Grands Secteurs Oiseaux Mammifère marins

 Sous régions marines DCSMM

bathymétrie

0

-5000

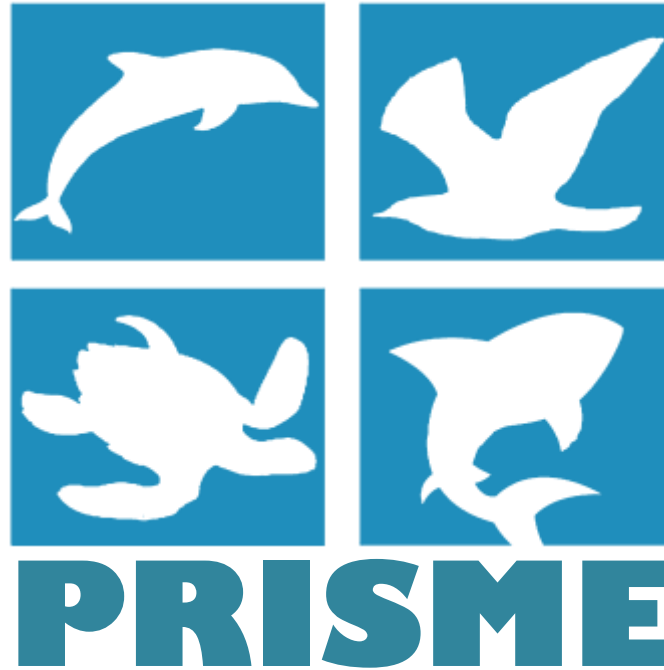


Source des données:  
bathymétrie: European Marine Observation and Data Network  
Grands Secteurs Oiseaux Mammifères: MNHN

Système de coordonnées: WGS 84 - projection Mercator

- Management of MPA ;
- Evaluate the effectiveness of management ;
- Building performance indicators ;
- For a MPA Dashboard ;
- Adjust management ;
- Share monitored and management between AMP functionally important for the species ;
- Coherence between the local, national, European and international initiatives ;
- .../...

# 11 months to built a European project on the top predators !!!

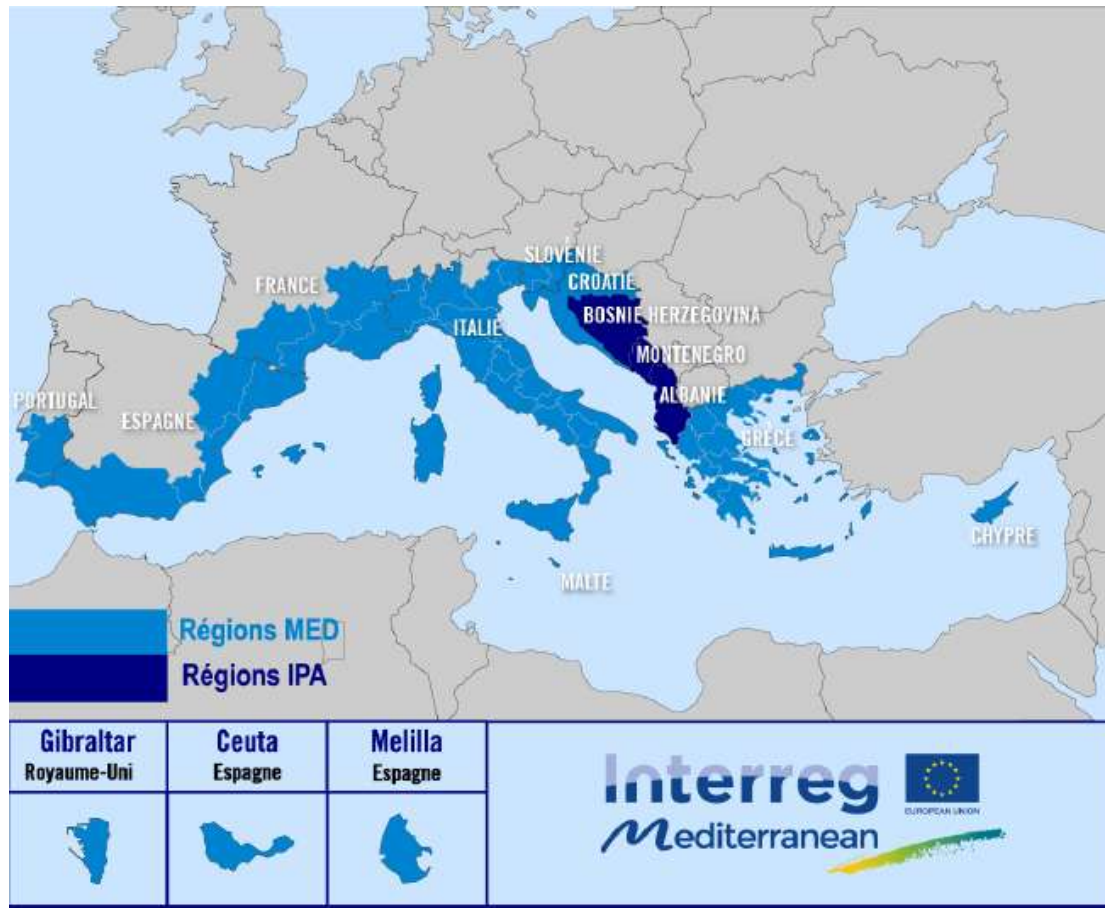


top PRedators : observatorY and Management in the MEditerranean sea




The **main purpose** of the PRISME INTERREG is to build bridges between the different stakeholders in each country in order to promote the long term conservation of top predators to scale, at first, the northwestern Mediterranean

## Geographical area :





# 6 targets

1. Develop an observatory of top predators including species of Community interest and covered by Annex II to the SPA Protocol / CBD
2. Characterization of levels and trophic network of the North Western Mediterranean for seabirds, marine mammals and sea turtles
3. Assess the interactions between human activities and species Natura 2000 / Barcelona
-  4. Implementation and deployment of pressure reduction measures on top predators
5. Joint governance tools across the Mediterranean to seabirds, marine mammals and sea turtles
6. Contributions objectives 1-5 on the Conservation of Elasmobranch



# Contacts



## Promotion and project financing mount PRISME : Mediterranean office – French MPA

26 rue de la République 13 001 MARSEILLE Tél : 04.96.17.54.75/06.87.91.07.05

Mediterranean office : [boris.daniel@aires-marines.fr](mailto:boris.daniel@aires-marines.fr)

## French partners for mounting :

Marine mammals and global project	GIS3M : Groupement d'intérêt scientifique pour les mammifères marins de méditerranée	<a href="mailto:hlgis3m@gmail.com">hlgis3m@gmail.com</a>
Seabirds	Conservatoire des espaces naturels Corse, Parc national des Calanques (LPO ?)	
Sea turtles	GTMF : Groupe tortue marine de France	<a href="mailto:fclaro@mnhn.fr">fclaro@mnhn.fr</a>
Elasmobranch	Ifremer ?	





*It's not a french project, it's en European  
project/Mediterranean project for the conservation of  
the top predators*

**11 months to built a European project  
on the top predators !!!**

**December 2015 : beginning mounting**



**November 2016 : project repository to  
the Interreg MED office in Marseille,  
France**